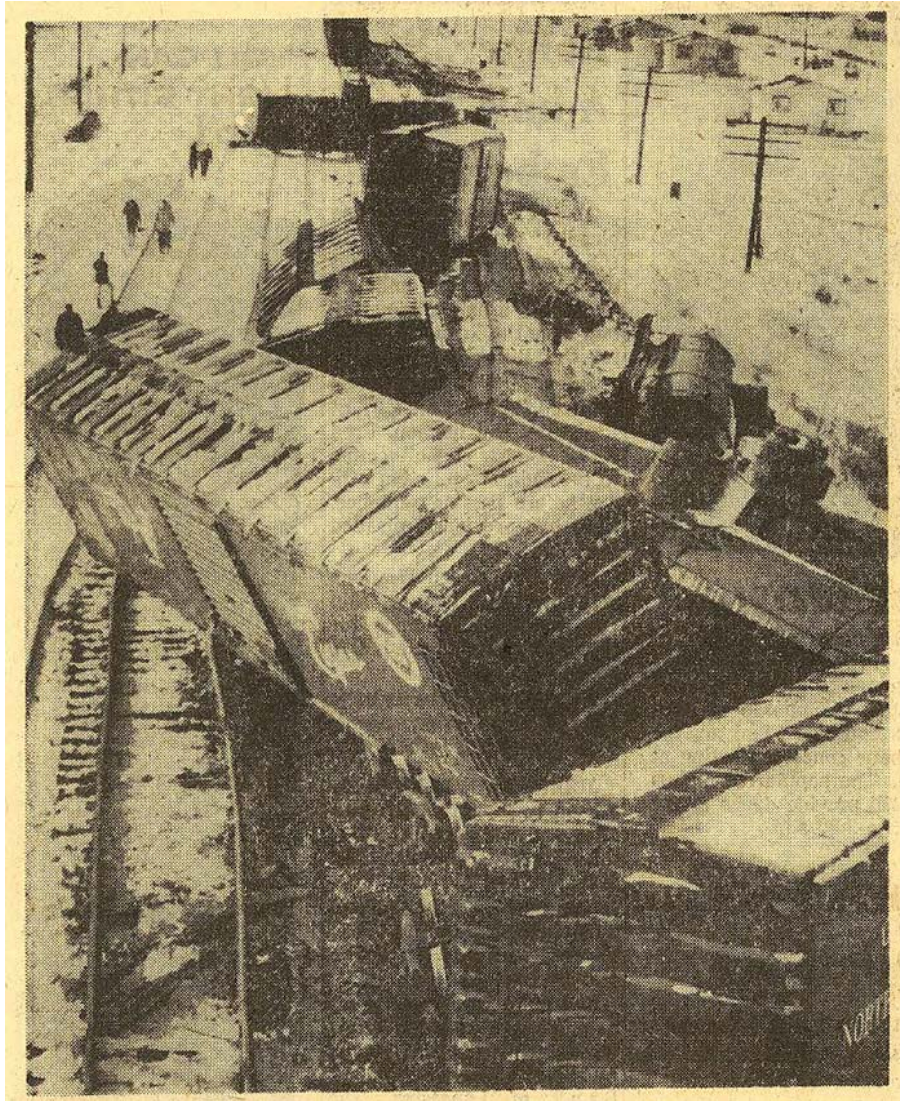


17 Cars on B&O [Railroad] Are Derailed East of Columbus

(Columbus Dispatch, December 1, 1958)



SUMMIT STATION WRECK – A jumble of boxcars and tankers sprawls beneath a signal bridge of the B&O Railroad at Summit Station, 18 miles east of Columbus. Wreck of 17 cars of a Pennsylvania Railroad freight, bound for Columbus at noon Sunday, tied up traffic on the line until 4 a.m. Monday. Pipe from a loaded gondola sprayed into the back yards of a row of homes, at upper right in photo. No one was hurt. – (Dispatch Staff Photo)

A train wreck on the B&O Railroad's mainline east of Columbus disrupted rail traffic from noon Sunday until early Monday morning

The derailment of 17 cars in a 60-car freight, en route from Pittsburgh to Columbus, ripped out 300 feet of track on the westbound and 100 feet on the eastbound line.

No one was injured as the cars, traveling about 50 miles an hour, left the tracks and sprawled toward a nearby row of homes. Several of the cars tore free from the train with such force that their wheel-trucks ripped from under them.

A LOAD OF six-inch steel pipe flew from a loaded gondola car and fell in the backyard of Lester Collings' home, 9435 Tower Rd. Summit Station. A dozen of the heavy 30 foot lengths of pipe landed within 10 feet of Collings' automobile, parked by the side of his house.

The greatest damage to the tracks, three main lines and two sidings, occurred under a signal bridge at the Summit Tower where box cars and tank cars lay at all angles.

To the west, a tank car was knocked astride the rails and two gondolas, still on the track, were heavily damaged.

The pile-up was thought to have been caused by a burned-out journal-box which dropped off and pulled the wheel-truck from under one of the lead gondolas, Licking County Deputy Sheriff Ray Wilson said.

WRECK TRAINS from Columbus and Dennison worked through the near-zero temperatures of the night and restored service at 4 a.m. Monday. Passenger trains were taken around the wreck on a light track and freights were re-routed.

The wreck crews were still working on the derailed cars, Monday

The conductor on the wrecked freight car was identified by Licking County deputies as C.C. Keller, of Columbus. The engineer was E.C. Wyant, of 158 W. Weber Rd., Columbus and the flagman was E.D. Fuller, of 583 Blenheim Rd., Columbus. None of the crew was hurt.