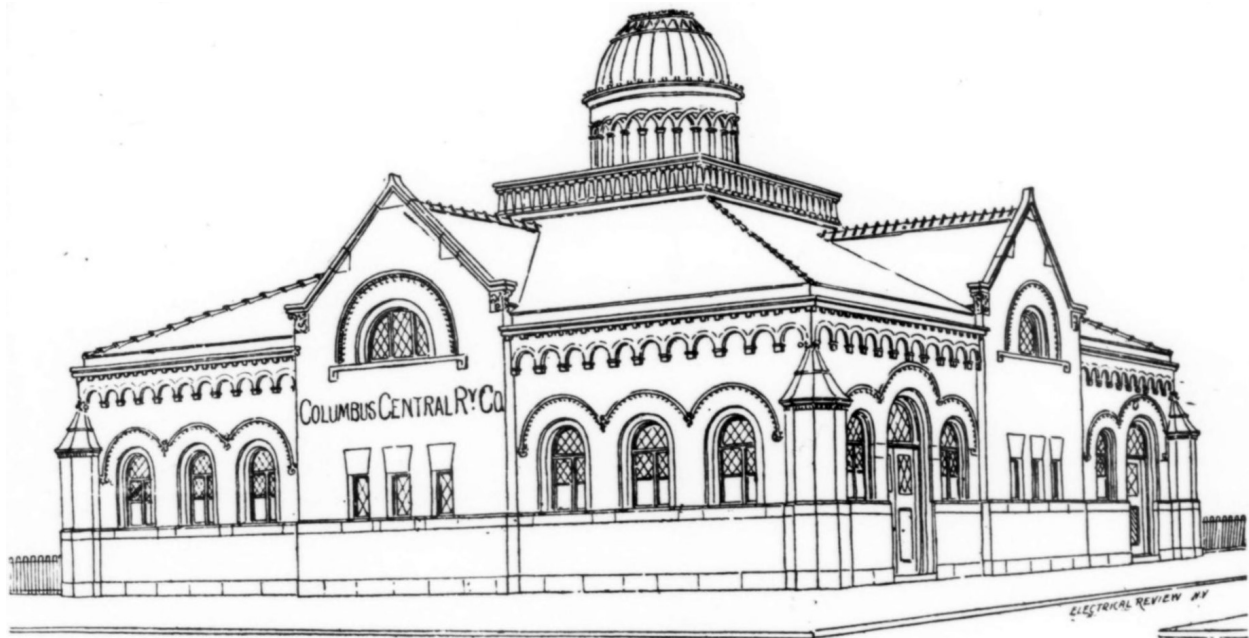


ELECTRIC POWER HOUSE

Handsome Structure of the Columbus Central Street Railway Company – Location and Character of the Building – New Features.

(Columbus Evening Dispatch, July 21, 1894) – The power house for the new Columbus Central Street Railway company to operate the line now under construction between Columbus and Westerville will be located on Cleveland avenue at the corner of Fifth avenue and prove a valuable acquisition to that section of the city. The accompanying cut gives an excellent view of the power house. The structure will be of cut stone, red and terra cotta brick surmounted by a steel dome and roof and the inside walls of white glazed brick. The building is to contain Westinghouse compound engines, direct coupled generators and Sterling boilers, representing a total capacity of about 3,000 horse power.



THE COLUMBUS CENTRAL RAILWAY COMPANY'S NEW POWER HOUSE.—A PROGRESSIVE DEPARTURE
IN ARCHITECTURAL EFFECTS.

The usual objectionable accompaniment of a power house in the shape of a stack will be removed and instead mechanical draught will be used and the short stack concealed within the dome. At the same time a draught equal to a stack four hundred feet high is obtained. Every modern improvement pertaining to the highest attainable perfection and degree of efficiency in operating is to be employed, the whole structure to be fire-proof in every sense and smokeless

furnaces to be one of the features. In short, the aim of the company is to make the power house a credit to the city of Columbus, and it is believed that in external appearance and adaptability to the purpose there is no other such power house in the world. Yost & Packard, of this city, are the architects, and Barry & McTighe, of New York, the engineers. Excavation will commence Monday if the weather is favorable, and when completed the power house and its contents will represent an expenditure of \$125,000.

The letting of the contracts on the building, of which there will be several, will be completed Monday next.