

ELECTRIC TRACTION

Vol. XVI

CHICAGO, ILL., APRIL, 1920

No. 4

Buckeye Lake Park

A Study of the Requirements for Proper Recreation Has Resulted in the Providing of Facilities Which, Combined With National Beauty, Make This Park Popular and a Traffic Producer For The Ohio Electric Railway

By CHARLES W. GEIGER

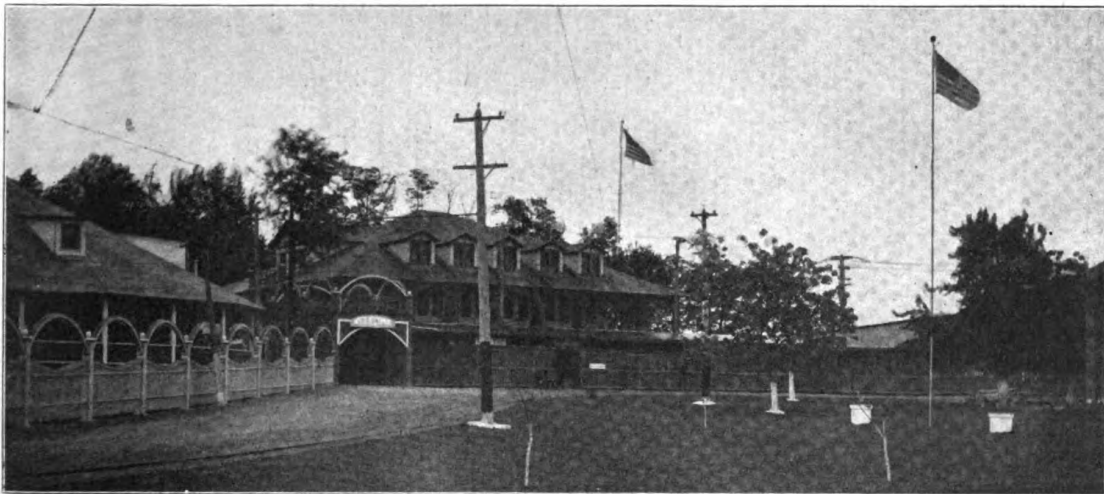
Buckeye Lake Park lies in Licking County, in the central part of Ohio. It is reached in 55 minutes from Columbus by trolley, over the Ohio Electric Railway. It is reached in 20 minutes from Newark, and one hour from Zanesville by trolley, over the Ohio Electric Railway.

Columbus is the capitol of Ohio with a population of 250,000 people. More than 100,000 people occupy the hotels and over 2,000 cottages at Buckeye Lake Park each season, while uncounted thousands of visitors come here for just a day.

nating the lake (known at that time as the Licking Summit Reservoir) as a public park, to be known in the future as Buckeye Lake.

Ohio Electric Railway Service Increases Popularity

The principal attraction at the lake at that time was fishing. It was not, however, until the Ohio Electric Railway was built to the lake that the great crowds began to come. An idea of the popularity of the resort may be gained when it is known that as many as 45,000 persons visited the resort on a single day.



Electric Railway Loop and Loading Platform on Ohio Electric Railway at Buckeye Lake Park

Buckeye Lake Park is under the supervision of Messrs. Deffenhaugh and Captain Del Fisher. The park is situated along the northerly bank of Buckeye Lake, the third largest artificial lake in the United States. It was built almost 100 years ago, on one of the high spots on the line of the Ohio Canal, to supply water for the locks receding north and south. In 1894 the general assembly of Ohio passed an act desig-

Since the construction of the Ohio Electric Railway to the park there has been provided every form of wholesome amusement found at first class resorts, and the park at present is a close rival of Cedar Point. In addition to the amusement features, Buckeye Lake Park has all stores and business places necessary for the convenience of cottagers and patrons of the park, such as grocery stores, meat stores, drug store, marine

(Table of Contents on Page 265)

store, laundry, pressing clubs, news stands, information depot, long distance telephone service, garage, postoffice, photograph gallery and photo supplies, etc.

Conveniences and Facilities Increase Attendance

The park management operates four hotels, all located on the water front near the boat piers, restaurants, and concessions. The hotels are operated on the European plan. The Mauger hotel is the largest at the park, having fifty rooms all outside. In the rear of the hotel are beautifully kept grounds, fine lawn and flowers and numerous garages. In front of the hotel there are extensive rowboat piers, where fishermen are supplied with boats, bait and tackle. Directly east of the Mauger hotel is the Ladies' Rest Inn and Commercial Hotel and building. Between these buildings is a passageway leading to the athletic field and freight depot of the Ohio Electric. Immediately in front of the passageway is a pier from which freight is delivered to all points on the lake by motor boat.

Inn Provided for Women

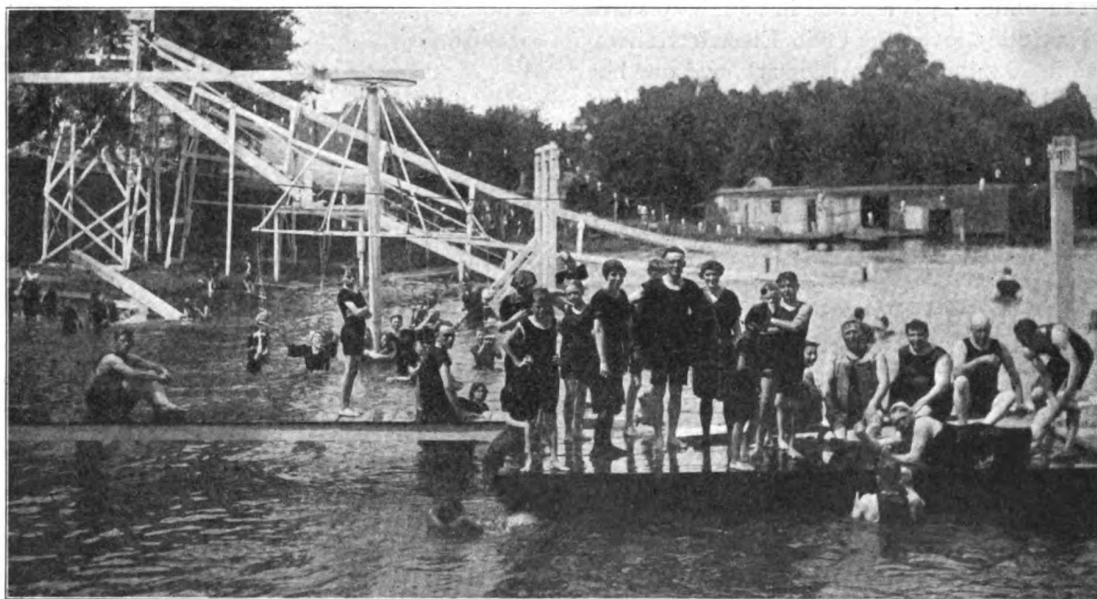
The Ladies' Rest Inn is for women only. On the

and east and north of this is the Buckeye Hotel, beneath which is the depot and waiting room of the railway. This hotel is shown to the left in the illustration and at the right of this hotel can be seen the dance pavilion. This hall is the scene of many popular and special dance features during the season and always has been a favorite place with thousands of park patrons.

All water used in the hotels and in the numerous bubbler fountains on the park grounds comes from a well 800 feet deep, which analysis has proven to be absolutely pure. All grounds and hotels are electrically lighted. Natural gas wells on the lake shore provide all the fuel. Good sanitation, pure water, natural gas, and electric light make a combination of conveniences to be found at few such resorts.

Free Parking Space for Automobiles

To accommodate automobile tourists here has been provided free parking privileges for 1,000 machines. The system of parking is such that any one of the 1,000 machines can be moved from the ground any time the



Bathing Beach and Equipment, Buckeye Lake Park on Ohio Electric Railway

ground floor is the photo gallery. In this building also is an automatic, or in-door baseball game. The first floor of the Commercial building is divided into concession booths and store rooms. Score-ball and skee-ball alleys occupy the west rooms, while in the east end are grocery, provision and meat stores, and a hardware and marine store.

Electric Railway Provides Both Passenger and Freight Service

In the rear of the Commercial building is the freight and baggage room and the entrance and loop of the Ohio Electric Railway shown in the illustration. Still further to the rear begins the cottage reservation where large numbers of cottages are rented each season to patrons of Buckeye Lake Park. Immediately east of the Commercial building is the park dance pavilion,

owner wishes to leave. There is also provided a service station within the grounds.

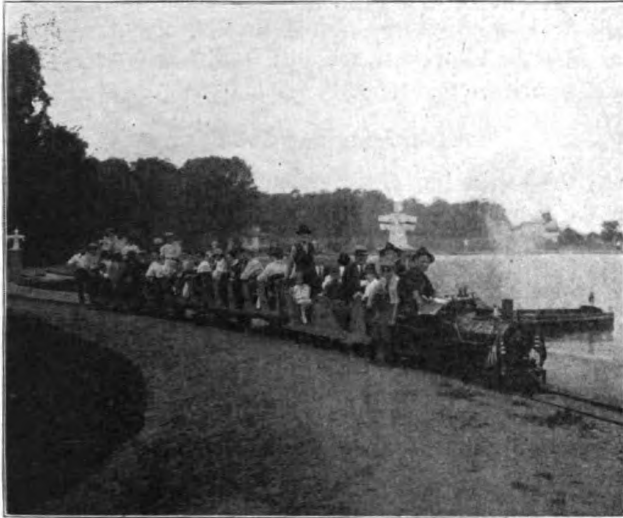
Boating Facilities

Yachting and motorboating are enjoyed by thousands, and exciting races are held frequently during the season, participated in by the 300 members of the Buckeye Lake Yacht Club, whose beautiful and well-appointed club house adjoins the park grounds. A fleet of nine passenger boats leave the boat house and pier every hour during the season for trips around the lake, stopping at all points of interest. Stopover privileges are allowed at any of these points, where the passenger may remain until some later boat arrives to take him along to the next point, or back to the hotel. There is also a fleet of 24 small motor boats which carry from four to six persons each. These are rented

to the general public who operate them, no experience being required to handle the boats safely and satisfactorily, on account of the simple equipment. Row boats and canoes carrying from one to four persons are provided with fishing tackle and rented out at a nominal charge. There is a great demand for these fishing boats, as there is no place in Ohio where better catches of large mouth and calico bass and other varieties of fish are made than in Buckeye Lake.

Bathing Beaches

Four bathing beaches mark the thirty-two miles of shore line as follows: Park bathing beach, shown in



Miniature Railway, One of the Attractions at Buckeye Lake Park, Served By the Ohio Electric Railway

the illustration, is inside the park and is provided with all types of apparatus; Buckeye bathing beach is on the shore line of a small island and can be reached by boat; Summerland bathing beach and Shell beach, each of which is on the south side of the lake and in front of the Summerland and Shell Beach hotels. Here are the only extensive bathing beaches in central Ohio, and because of the clean sandy beach that characterizes each, Buckeye Lake is sometimes called the Atlantic City of Ohio.

There is also a very creditable athletic field, which is free to patrons of the park. A two-story grand stand with a reserved section overlooks the baseball diamond. Various athletic contests are held here.

Concessions and Conveniences

One of the illustrations shows the miniature railroad which is on the shore of Crane Lake, within the park grounds. It is a real steam locomotive and the trip around Crane Lake is made for a very small charge. The largest roller skating rink in Ohio is located at the park. A large merry-go-round is also installed in a large and permanent circular building. There is a large check room located just inside the Ohio Electric depot. The check room is under the management of the park, and grips, parcels, baskets and wearing apparel can be checked conveniently.

At Picnic Point, a beautiful, shady spot projecting

into the lake and protected by a concrete wall, there has been provided permanent dining tables and benches for 350 picnickers. These are free and picnic parties are made welcome, as well as to free use of a natural gas hot plate.

Electric Railway Maintains Year Round Service

There is a considerable permanent population at Buckeye Lake Park and it is growing each year. The stores and post-office are open all the year. Many people enjoy the beauties of the lake in winter as well as in summer. To accommodate these people the Ohio Electric Railway maintains ample service between the park and Hebron, which is two miles distant and on the main line of the Ohio Electric route from Columbus to Newark and Zanesville. At Hebron connections are made for all cars east and west. During the park season all cars (except specials and limited) stop at the lake. Buckeye Lake Park is 30 miles from Columbus, eleven miles from Newark, and 39 miles from Zanesville. During the summer season numerous excursions are run from these three cities. Special cars are provided for this service. Large numbers of persons from these cities spend the week end at the lake, and still larger numbers spend Sunday at the lake.

Reasons for Popularity

All business places at the park are in charge of competent, agreeable and obliging people, and no exorbitant prices are charged for supplies. Patrons occupying cottages at points on the lake secure their supplies by regular motor boat delivery.

The convenient location, the pure artesian water, the beautiful surroundings, the high altitude, the healthful and congenial atmosphere, the moderate cost of living, the good order, and a great variety of wholesome amusements are a few of the reasons why increasing thousands of people go to Buckeye Lake Park each season.

An underground bakery furnishes all the bread used by the refugee population in the ruined city of Verdun. No other building was sufficiently undamaged to house a bread baking establishment for the returning townspeople, so the great "subway" ovens are daily turning out long, crisp loaves which compose the principal food of those toiling among the ruins. Several times each day the bread is brought to the mouth of the black cavern beneath the great walls, where lines of people await their rations.

The bakeshop is a part of the famous underground city of Verdun, built after the war of 1871 and designed to house 30,000 persons during an attack. During the Great War, thousands of soldiers and a few refugees lived in this subterranean abode while the city was under fire for nearly five years. The bakery was in operation during the whole time.

The American Red Cross has a large depot in the heart of the city and has supplied clothes and some articles of food to the distressed civilians.